

## Parts List

8118.280 Salvador Inox



# Table of Contents

|                                      |          |
|--------------------------------------|----------|
| <b>1 Introduction.....</b>           | <b>2</b> |
| 1.1 Specially approved products..... | 2        |
| <b>2 Product Description.....</b>    | <b>3</b> |
| 2.1 Products included.....           | 3        |
| 2.2 The data plate.....              | 3        |
| <b>3 Exploded View.....</b>          | <b>4</b> |
| 3.1 Exploded View.....               | 4        |
| <b>4 Spare Parts.....</b>            | <b>5</b> |
| 4.1 List of parts.....               | 5        |

# 1 Introduction

## **Purpose of this manual**

The purpose of this manual is to provide necessary information on spare parts and accessories order.

## **Disclaimer**

Always use genuine Grindex parts. The use of other spare parts or accessories can invalidate any claims for warranty or compensation. Grindex does not take any responsibility for damages that are caused by the use of non-original parts. For more information, contact your local sales and service representative.

## **Data for ordering spare parts**

The following information is needed for spare part orders:

- Serial number of the product
- Part number
- Quantity of bulk material, see \* in tables

## **1.1 Specially approved products**

### **Qualification of personnel**

Only Grindex or Grindex-authorized service personnel may undertake repair work on Ex-approved products.

### **Dimensional accuracy inspection**

Spare parts marked with (Ex) after the part number are subject to dimensional accuracy inspection when used in specially approved products.

# 2 Product Description

## 2.1 Products included

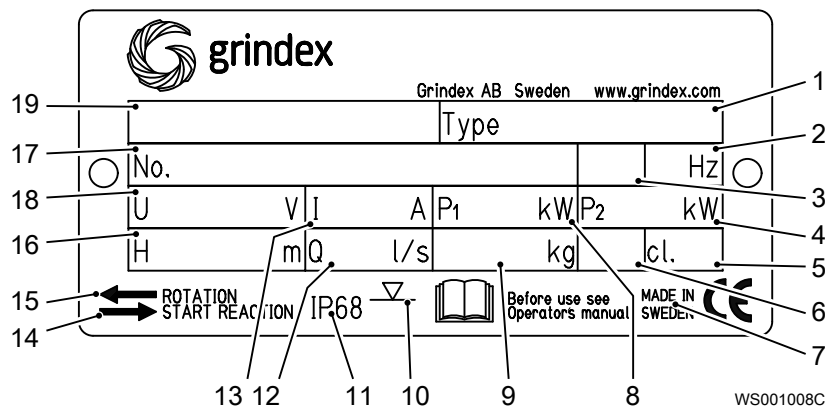
| Pump model             | Standard | EX | MSHA | Drainage | Sludge |
|------------------------|----------|----|------|----------|--------|
| Salvador INOX 8118.280 | X        |    |      |          | X      |

## 2.2 The data plate

### Introduction

The data plate is a metal label located on the main body of the pump. The data plate lists key product specifications.

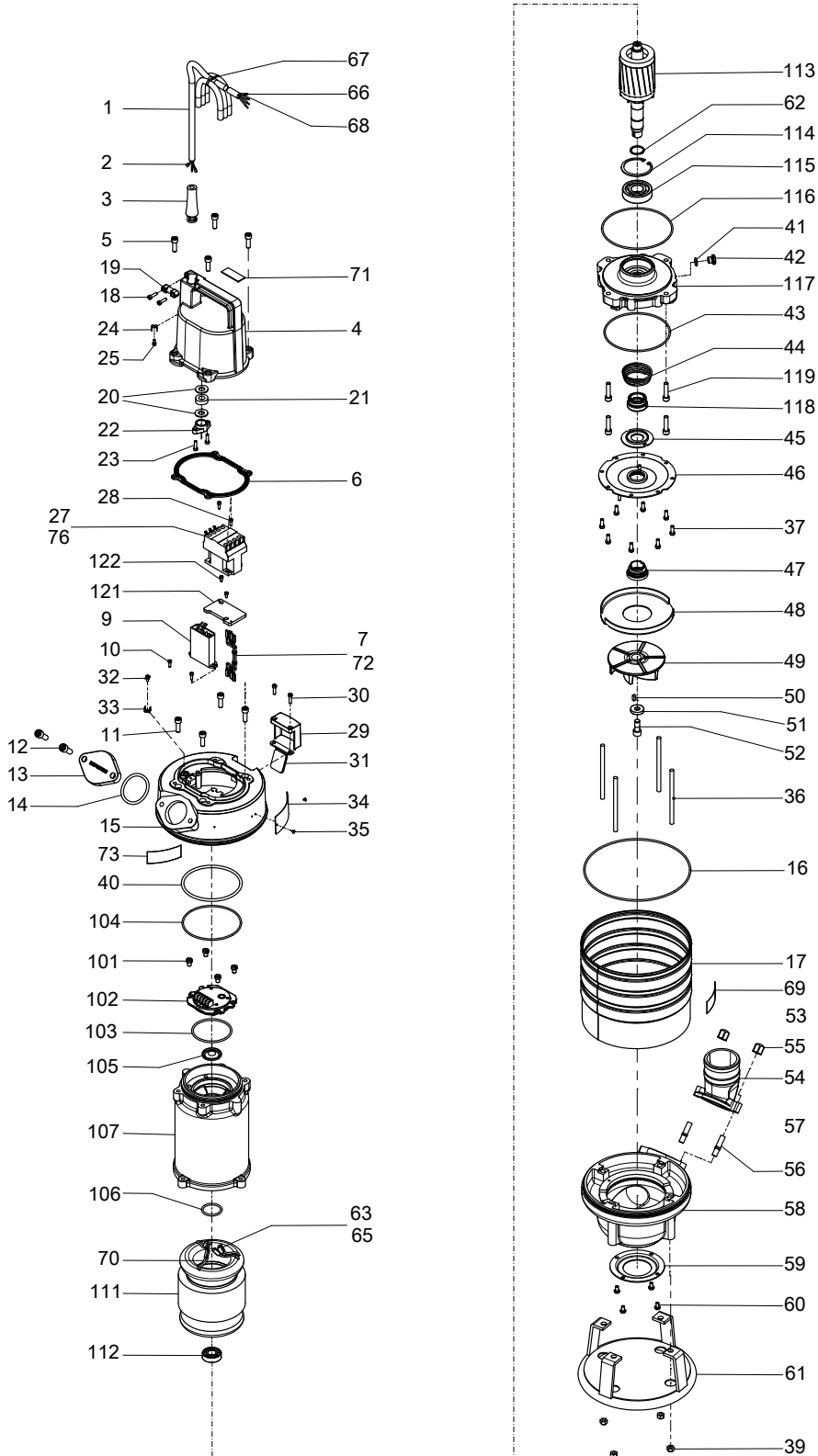
### The data plate



1. Pump type number
  2. Frequency
  3. Phases, type of current
  4. Rated shaft power
  5. Thermal class
  6. Locked rotor code-letter
  7. Country of origin
  8. Maximum power consumption
  9. Product weight
  10. Maximum submersion depth
  11. Degree of protection
  12. Maximum capacity
  13. Rated current
  14. Direction of the start reaction
  15. Direction of the impeller rotation
  16. Maximum head
  17. Serial number
- The first two characters describe the production year.
18. Rated voltage
  19. Pump model

# 3 Exploded View

## 3.1 Exploded View



20186A\_8118\_280\_expl\_view

# 4 Spare Parts

## 4.1 List of parts

| Pos. No | Part. No  | Denomination  | Qty/Version |
|---------|-----------|---|-------------|
|         |           |   | 280         |
| 1       | 131 040   | Motor cable subcab 4G1.5<br>Power cable x 1 10,50 - 11,50mm L= 20m<br>Starter (Phase shifter) 3-phase 220V - 575 V Current range: 0 - 16 A    | *           |
| 1       | 131 039   | Motor cable subcab 4G2.5<br>Power cable x 1 12,50 - 13,50mm L= 20m  | *           |
| 1       | 410 065   | Motor cable subcab 14 AWG/4<br>Power cable x 1 14,20 - 15,20mm L= 16m<br>Starter (Phase shifter) 3-phase 220V - 575 V Current range: 0 - 16 A | *           |
| 2       | 50 040 04 | Flat pin sleeve 1.0-2.5 MM2   | 4           |
| 2       | 50 040 05 | Insulating sleeve 0.5-6 MM2   | 4           |
| 3       | 50 428 00 | Bending protection<br>SUBCAB 4G1,5 10,50 - 11,50mm  | 1           |
| 3       | 50 428 01 | Bending protection<br>SUBCAB 4G2,5 12,50 - 13,50mm  | 1           |
| 3       | 50 428 02 | Bending protection<br>SUBCAB 14AWG/4 14,20 - 15,20mm  | 1           |
| 4       | 50 709 00 | Cover   | 1           |
| 5       | 50 021 30 | Hex.socket hd screw M8X25-A4-80   | 4           |
| 6       | 50 038 01 | Gasket  | 1           |
| 7       | 50 035 01 | Cable unit  | 1           |
| 9       | 51 511 05 | Motor protector SMART<br>50Hz 500V<br>50Hz 380V - 415V  | 1           |
| 9       | 51 511 06 | Motor protector SMART<br>60Hz 440V - 460V<br>60Hz 575V - 600V   | 1           |
| 10      | 50 018 00 | Hex.socket hd screw M4X12-A4-70   | 2           |
| 11      | 50 021 30 | Hex.socket hd screw M8X25-A4-80   | 4           |
| 12      | 50 022 17 | Hex.socket hd screw M10X25-A4-70  | 2           |
| 13      | 50 723 00 | Inspection cover  | 1           |
| 14      | 50 037 08 | O-ring 56.52X5.34 FPM   | 1           |
| 15      | 50 738 00 | Main cover  | 1           |
| 16      | 50 037 14 | O-ring 209.14X3.53 FPM  | 1           |

| Pos. No | Part. No  | Denomination                       | Qty/Version                                       |
|---------|-----------|------------------------------------|---|
|         |           |                                    | 280   |
| 17      | 50 063 03 | Outer casing                       | 1   |
| 18      | 50 019 00 | Hex.socket hd screw<br>M5X18-A4-70 | 2   |
| 19      | 50 725 00 | Cable clip                         | 1   |
| 20      | 50 016 13 | Plain washer 12.5X26.5-<br>A4-70   | No of cable entries: 1<br>(10)-12mm               |
| 20      | 50 016 14 | Plain washer 14.5X26.5X2-<br>A4-70 | No of cable entries: 1<br>(12)-14mm               |
| 20      | 50 016 15 | Plain washer 16.5X26.5X2-<br>A4-70 | No of cable entries: 1<br>(14)-16mm               |
| 21      | 50 015 00 | Seal sleeve (10)-12 MM CR          | No of cable entries: 1<br>(10)-12mm               |
| 21      | 50 015 01 | Seal sleeve (12)-14 MM CR          | No of cable entries: 1<br>(12)-14mm               |
| 21      | 50 015 02 | Seal sleeve (14)-16 MM CR          | No of cable entries: 1<br>(14)-16mm               |
| 22      | 50 726 00 | Entrance flange                    | 1   |
| 23      | 50 019 00 | Hex.socket hd screw<br>M5X18-A4-70 | 2   |
| 24      | 50 119 00 | Flat pin sheet                     | 1   |
| 25      | 133 525   | Earthing screw                     | 1   |
| 27      | 410 812   | Contactator                        | 50Hz 500V<br>50Hz 380V - 415V<br>60Hz 440V - 460V |
| 27      | 410 891   | Contactator                        | 50Hz 550V<br>60Hz 575V - 600V                     |
| 28      | 50 018 00 | Hex.socket hd screw<br>M4X12-A4-70 | 4   |
| 29      | 50 722 00 | Air release valve                  | 1   |
| 30      | 50 019 00 | Hex.socket hd screw<br>M5X18-A4-70 | 2   |
| 31      | 50 013 00 | Air release valve                  | 1   |
| 32      | 50 018 04 | Hex.socket hd screw M4X6-<br>A4-70 | 1   |
| 33      | 50 119 00 | Flat pin sheet                     | 1   |
| 34      | 50 888 00 | Plate-blank                        | 1   |
| 35      | 410 393   | Drive screw 4X5-A4                 | 2   |
| 36      | 50 021 35 | Stud                               | 4   |
| 37      | 50 020 18 | Hex.socket hd screw<br>M6X16-A4-70 | 8   |
| 38      | 50 037 67 | O-ring 8X3 FPM                     | 4   |
| 39      | 50 021 36 | Lock nut M8-A4-70                  | 4   |
| 40      | 50 037 07 | O-ring 117.5X5.34 FPM              | 1   |

| Pos. No | Part. No  | Denomination                        | Qty/Version   |
|---------|-----------|-------------------------------------|---|
|         |           |                                     | 280   |
| 41      | 50 037 13 | O-ring 12.37X2.62 FPM               | 1   |
| 42      | 50 705 00 | Inspection screw                    | 1   |
| 43      | 50 037 15 | O-ring 134.5X3.0 FPM                | 1   |
| 44      | 50 559 01 | Compression spring                  | 1   |
| 45      | 50 740 00 | Plate                               | 1   |
| 46      | 50 581 01 | Oil housing bottom                  | 1   |
| 47      | 50 789 00 | Mechanical seal RSIC/RSIC<br>FPM    | 1   |
| 48      | 50 704 00 | Guide plate                         | 1   |
| 49      | 50 803 00 | Impeller                            | N 50Hz 3-phase Max<br>ambient temp=40 DC Mtrl.<br>Stainless steel, castings |
| 49      | 50 803 01 | Impeller                            | N 60Hz 3-phase Max<br>ambient temp=40 DC Mtrl.<br>Stainless steel, castings |
| 50      | 50 205 03 | Parallel key 5X5X14-<br>A4-220HB    | 1   |
| 51      | 50 022 27 | Plain washer 10.5X28X6-<br>A4-140HV | 1   |
| 52      | 133 148   | Hex.socket hd screw<br>M10X25       | 1   |
| 53      | 50 037 64 | O-ring 216X3 FPM                    | 1   |
| 54      | 50 733 00 | Discharge connection 3"             | DN 75 Hose  |
| 54      | 50 733 01 | Discharge connection ISO<br>G3"     | DN 75 Thread : ISO G3A<br>Outer   |
| 54      | 50 733 02 | Discharge connection 3-8<br>NPT     | DN 75 Thread : NPT 3-8<br>Outer   |
| 55      | 50 022 25 | Acorn nut                           | 2   |
| 56      | 50 022 21 | Stud                                | 2   |
| 57      | 50 037 08 | O-ring 56.52X5.34 FPM               | 1   |
| 58      | 50 716 00 | Pump housing unit                   | 1   |
| 59      | 132 739   | Holding ring                        | 1   |
| 60      | 410 396   | Hexagon head screw<br>M6X10-A4-70   | 4   |
| 61      | 50 706 00 | Stand                               | 1   |
| 62      | 130 818   | Retaining ring 25-SPRING<br>STEEL   | 1   |
| 63      | 50 040 05 | Insulating sleeve 0.5-6<br>MM2      | 8   |
| 63      | 50 040 05 | Insulating sleeve 0.5-6<br>MM2      | 5   |
| 64      | 50 040 05 | Insulating sleeve 0.5-6<br>MM2      | 8   |



| Pos. No | Part. No  | Denomination                      | Qty/Version  |   |
|---------|-----------|-----------------------------------|--|---|
|         |           |                                   | 280  |   |
| 64      | 50 040 05 | Insulating sleeve 0.5-6 MM2       | 11   |   |
| 65      | 50 040 04 | Flat pin sleeve 1.0-2.5 MM2       | 8  |   |
| 65      | 50 040 09 | Flat pin sleeve 0.75-1.5 MM2      | 5  |   |
| 66      | 50 221 02 | End sleeve 2.5 MM2; L=7 MM        | 4  |   |
| 67      | 105 839   | Cable tie 98X2.5 MM               | 1  |   |
| 68      | -         | Marking tape                      | 1  |   |
| 69      | 410 053   | Oil ISO VG 32                     | *  |   |
| 70      | 410 139   | Insulating hose D=12 MM           | *  |   |
| 71      | 50 898 00 | Marking tape                      | 1  |   |
| 72      | 50 509 00 | Cable set                         | 1  |   |
| 73      | 50 992 00 | Sticker CUT HAZARD                | 1  |   |
| 74      | 51 735 00 | Sticker                           | 2  |   |
| 74      | 51 735 01 | Sticker                           | 2  |   |
| 75      | 51 622 00 | Connection plate                  | 1  |   |
| 76      | 410 034   | Closed-end splice 3-6 (AWG 12-10) | 3  |   |
| 101     | 50 021 31 | Slotted head screw M8X10-A4       | 4  |   |
| 102     | 50 009 00 | Connection term boar              | 1  |   |
| 103     | 50 037 27 | O-ring 74.61X3.53 FPM             | 1  |   |
| 104     | 50 037 09 | O-ring 119.5X3 FPM                | 1  |   |
| 105     | 140 365   | Cover                             | 1  |   |
| 106     | 50 037 11 | O-ring 39.69X3.53 FPM             | 1  |   |
| 107     | 50 711 00 | Stator housing                    | 1  |   |
| 108     | 410 034   | Closed-end splice 3-6 (AWG 12-10) | 3  |   |
| 111     | 50 042 05 | Stator 14-07-2b                   | 3-phase 50Hz 2-poles<br>220V-230V D 380V-415V Y          | 1 |
| 111     | 50 042 09 | Stator 14-07-2b                   | 3-phase 50Hz 2-poles<br>500V-550V Y                      | 1 |
| 111     | 50 042 14 | Stator 14-07-2b                   | 3-phase 60Hz 2-poles<br>440V-460V YSER 220V-<br>230V Y// | 1 |
| 111     | 50 042 16 | Stator 14-07-2b                   | 3-phase 60Hz 2-poles<br>575V-600V Y                      | 1 |
| 112     | 140 362   | Ball bearing 17X40X12             | 1  |   |
| 113     | 50 729 00 | Shaft unit                        | 1  |   |
| 114     | 140 064   | Retaining ring SGH 62             | 1  |   |
| 115     | 140 363   | Ball bearing 25X62X17             | 1  |   |

| Pos. No | Part. No  | Denomination                       | Qty/Version |
|---------|-----------|------------------------------------|-------------|
|         |           |                                    | 280         |
| 116     | 50 037 16 | O-ring 144.5X3 FPM                 | 1           |
| 117     | 50 713 00 | Bearing holder                     | 1           |
| 118     | 50 534 00 | Mechanical seal                    | 1           |
| 119     | 50 021 28 | Hex.socket hd screw<br>M8X35-A4-80 | 4           |
| 120     | 51 800 00 | Sticker                            | 1           |
| 121     | -         | Mounting plate                     | 1           |
| 122     | 410 379   | Hex.socket hd screw M4X6-<br>A4-70 | 2           |
| 300     | 50 102 00 | Phase shifter                      | 1           |
| 400     | 50 100 00 | Plug contact                       | 1           |
| 800     | 50 085 14 | O-ring kit FPM                     | 1           |
| 801     | -         | Zinc anode kit                     | 1           |
| 900     | 51 171 00 | Basic repair kit                   | 1           |